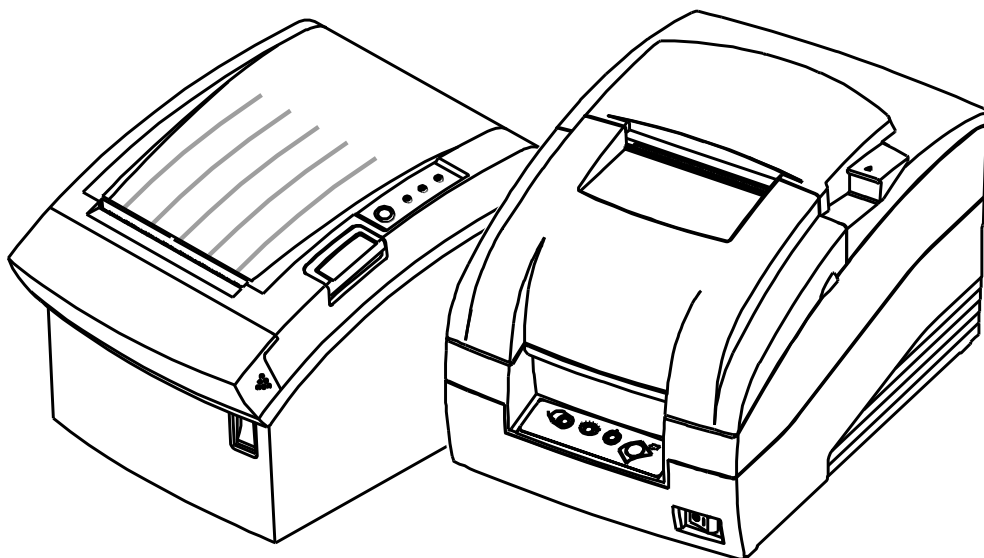




# Setup Utility Guide OPOS Driver

---

Rev. 2.10



<http://www.bixolon.com>

## **■ Table of Contents**

<b>1. Instruction .....</b>	<b>3</b>
<b>2. BIXOLON OPOS Setup .....</b>	<b>4</b>
2-1 POSPrinter Registration .....	4
2-2 CashDrawer Registration.....	7
2-3 LineDisplay Registration .....	9
2-4 MSR Registration.....	10

## **1. Instruction**

This is a manual about how to register and configure POSPrinter, LineDisplay, MSR produced by BIXOLON with BIXOLON OPOS Driver.

Further Source

OLE for Retail POS committee available from <http://monroecs.com/opos.htm>

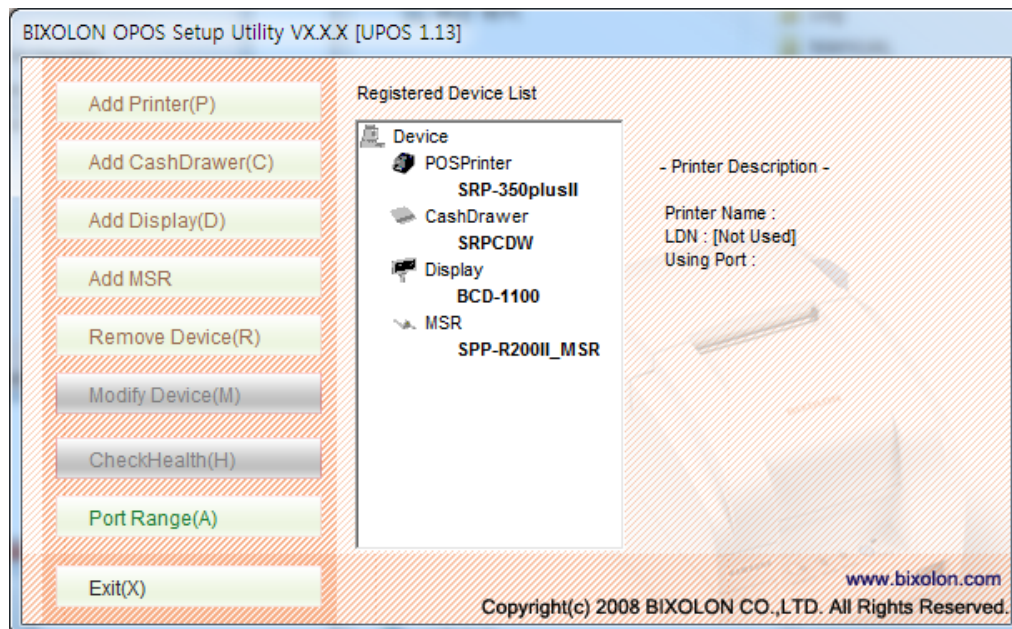
Driver Update from <http://www.bixolon.com>

We at BIXOLON maintain ongoing efforts to enhance and upgrade the functions and quality of all our products. In following, product specifications and/or user manual content may be changed without prior notice.

## 2. BIXOLON OPOS Setup

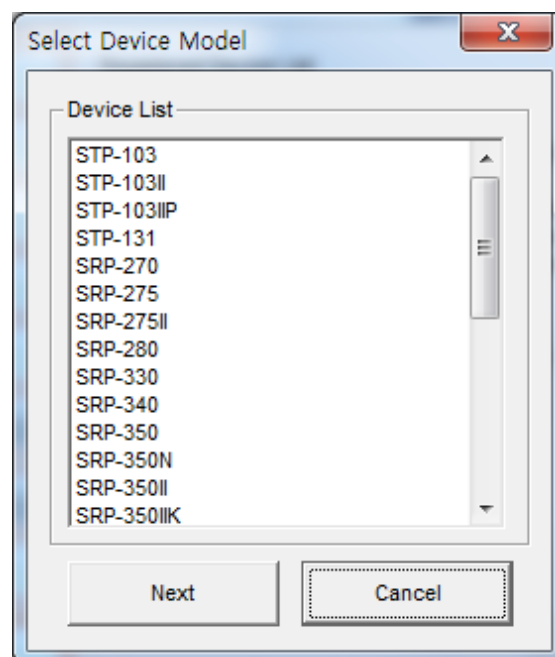
After BIXOLON OPOS Driver installation execute “BIXOLON OPOS Setup” to register or configure LineDisplay or POSPrinter, “BIXOLON OPOS Setup” that is located in “.

Start>Program>BIXOLON OPOS Driver>OPOS SETUP UTILITY”



### 2-1 POSPrinter Registration

1) Click “Add Printer” button.



2) Select printer model and Click “NEXT” button.

The screenshot shows a configuration window for the BIXOLON SRP-330 printer. It has two main sections: 'Device Name' and 'Local Device Name(LDN)'. The 'Device Name' field contains 'SRP-330'. Below these is the 'Port Settings' section, which includes a 'Select Interface' row with radio buttons for Serial (selected), Bluetooth, Parallel, USB, Ethernet, and WirelessLAN. Below this are several dropdown menus: Port (COM1), Baud Rate (9600), Bit Length (8), Parity (NONE), Stop Bit(s) (1), and Flow Control (DTR/DSR). To the right of these are input fields for Input Buffer (8192), Output Buffer (8192), Output Interval Time (0), and Input Sleep Time (0). There are also checkboxes for 'Log' and 'Binary'. A 'CheckHealth' button is located at the bottom right of the 'Port Settings' section. At the very bottom of the window are 'OK' and 'CANCEL' buttons. The footer contains the website 'www.bixolon.com' and the copyright notice 'Copyright(c) 2008 BIXOLON CO.,LTD. All Rights Reserved.'

3) Set the communication environment of the connected printer and click “SAVE” or “OK” button.

4) Click “Checkhealth” to see if the printer operates properly.

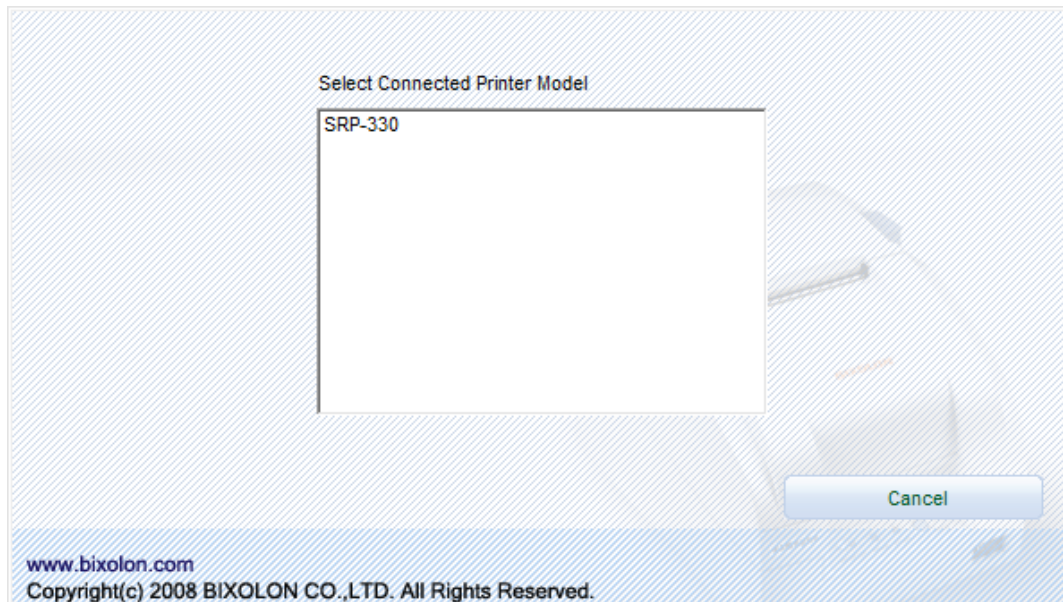
<POSPrinter CheckHealth Dialog >

The screenshot shows a dialog box titled 'Printer Check Health : - Interactive -SRP-330'. It has a 'Print' button and a 'Print Result' area. On the right, under 'Printer Status Property', it shows 'Power State: Online' and three checkboxes: 'Cover Open', 'Paper Empty', and 'Paper Near End'. At the bottom, it displays service object information: 'ServiceObjectDescription: BIXOLON UPOS ServiceObject, CopyRight (c) BIXOLON. 2002-2013', 'ServiceObjectVersion: 1.13.0', 'DeviceDescription: BIXOLON SRP-330 POSPrinter', and 'DeviceName: SRP-330'. An 'Exit' button is in the bottom right corner.

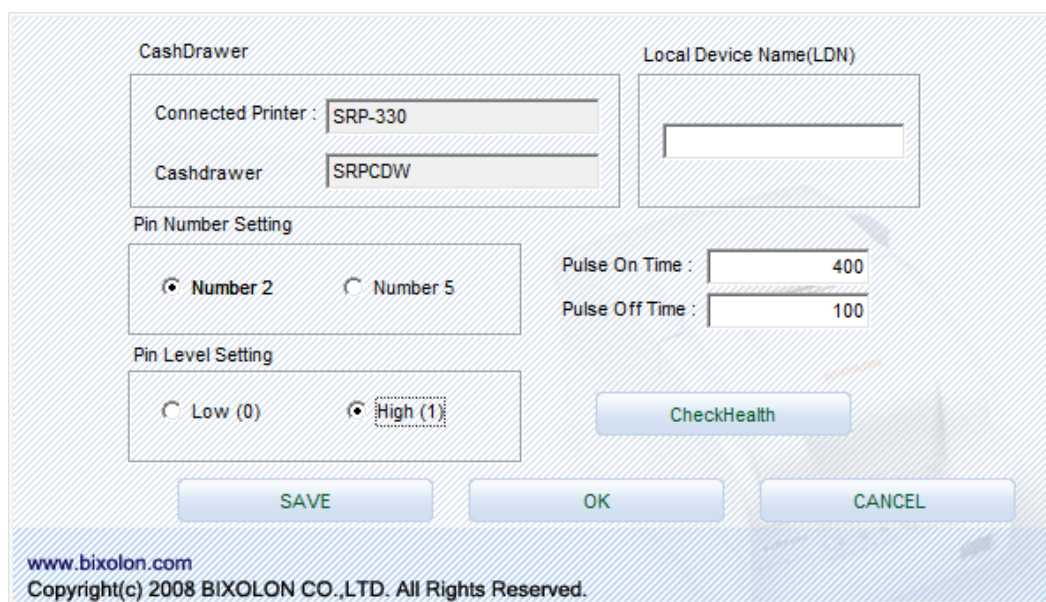
Item	Description
Logical Device Name (LDN) [Edit Box]	New Logical Device Names can be modified by typing the name in the box and then pressing the OK button.
Port [Drop List Combo Box]	Port setting.
Bits per second [Drop List Combo Box]	Baud rate setting for the COM port. This setting will be restricted according to the limitations of the device. If using parallel port, this control can not set and reference.
But Length [Drop List Combo Box]	Bit length setting for the COM port. This setting will be restricted according to the limitations of the device. If using parallel port, this control can not set and reference.
Parity Bits [Drop List Combo Box]	Parity setting for the COM port. This setting will be restricted according to the limitations of the device. If using parallel port, this control can not set and reference.
Stop Bits [Drop List Combo Box]	Stop bit setting for the COM port. This setting will be restricted according to the limitations of the device. If using parallel port, this control can not set and reference.
Handshake [Drop List Combo Box]	Handshake setting for the COM port. This setting will be restricted according to the limitations of the device. If using parallel port, this control can not set and reference.
Input Buffer (byte) [Edit Box]	Input buffer size for the COM port. Valid size must be from 32 to 8192. If using parallel port, this control can not set and reference.
Output Buffer (byte) [Edit Box]	Output buffer size for the COM and LPT port. Valid size must be from 32 to 4096.
Output Interval Time (msec) [Edit Box]	Sets the interval between retries (amount of time passed to the Win 32 API Sleep function) if there has been an error during output. Valid time value must be from 0 to 9999. For a slave device, this is disabled.
Input Sleep Time (msec) [Edit Box]	Sets an interval to be set (amount of time passed to the Win32 API Sleep function : not assistance) to cause the Device to sleep during input Valid time value must be from 0 to 99. For a slave device, this is disabled.
CheckHealth	Invoke the CheckHealth method for this device with Level = OPOS_CH_INTERACTIVE. This method inform status of printer.
Apply or OK [Button]	Save current settings and exit.
Cancel[Button]	Discard current settings and exit.

**2-2 CashDrawer Registration**

- 1) Click "Add CashDrawer" button.
- 2) Select the printer connected to Cashdrawer among the registered printers.

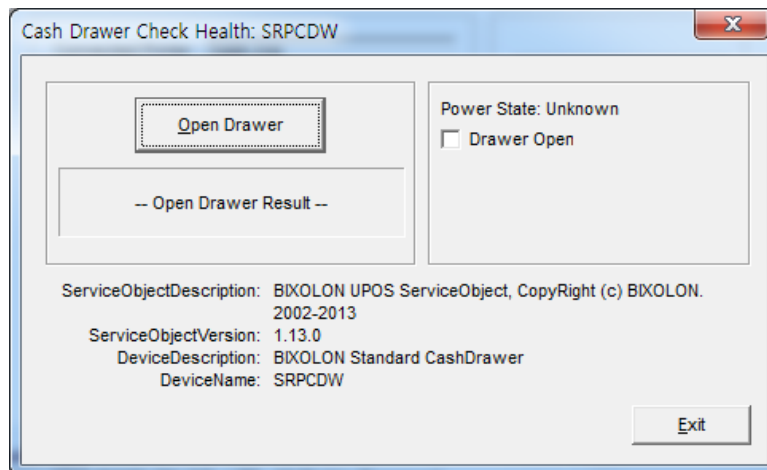


- 3) Set up CashDrawer and click "SAVE" or "OK" button.





- 4) Click “Checkhealth” to see if the printer operates properly.  
<CashDrawer CheckHealth Dialog >

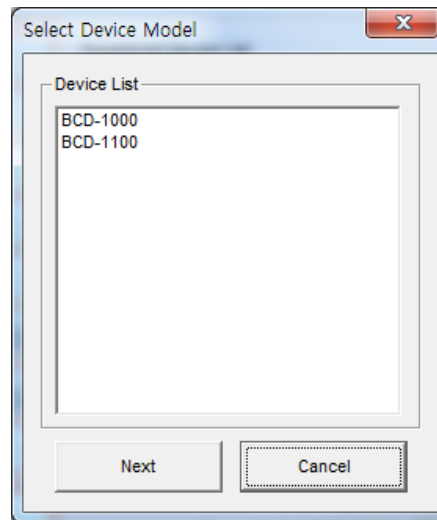


Item	Description
Pin Number	Pin Number of drawer kick connector outputting signals. (Default Value : Pin 2)
Open Level	This shows the symbol(Low/High) status when the drawer is closed. The status (Low.High) can be chosen from Open Level Frame. (Default Value : Low)
Pulse ON time	Pulse ON Time outputting the specified pin in Connector Pin No.(Default Value : 100[msec])
Pulse OFF time	Pulse OFF Time outputting the specified pin in Connector Pin No. The unit is millisecond. (Default Value : 400[msec])
CheckHealth	Invoke the CheckHealth method for this device with Level = OPOS_CH_INTERACTIVE. This method inform status of cashdrawer.



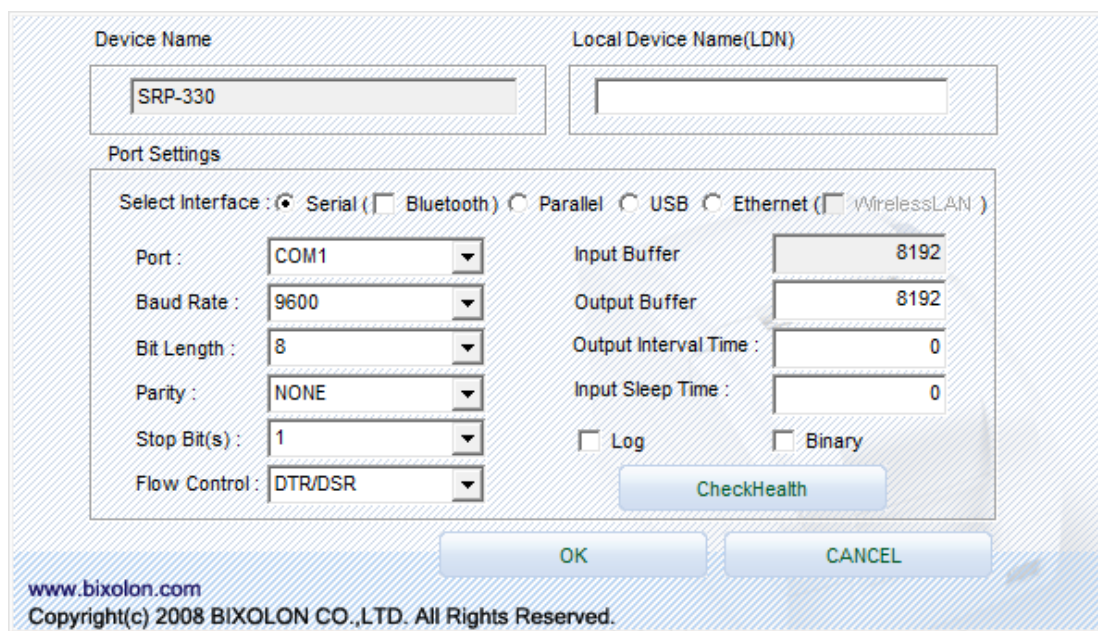
**2-3 LineDisplay Registration**

1) Click “Add LineDisplay” button.

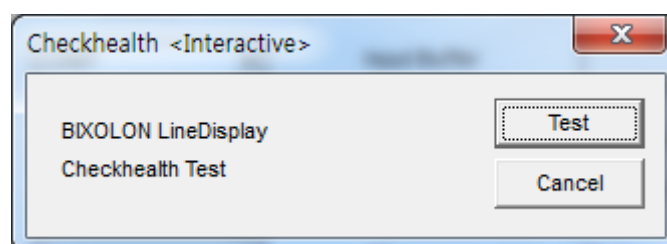


2) Select LineDisplay model and click “NEXT” button.

3) Set up LineDisplay and click “SAVE” or “OK” button.

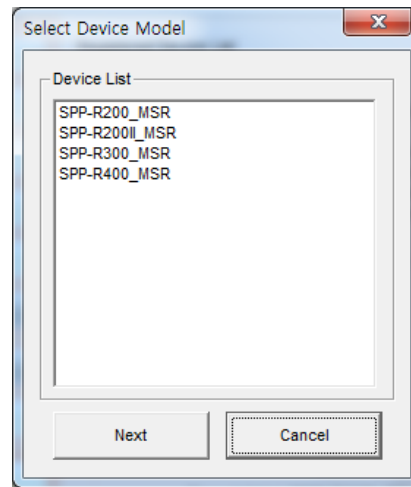


4) Click “Checkhealth” to see if the Linedisplay operates properly.



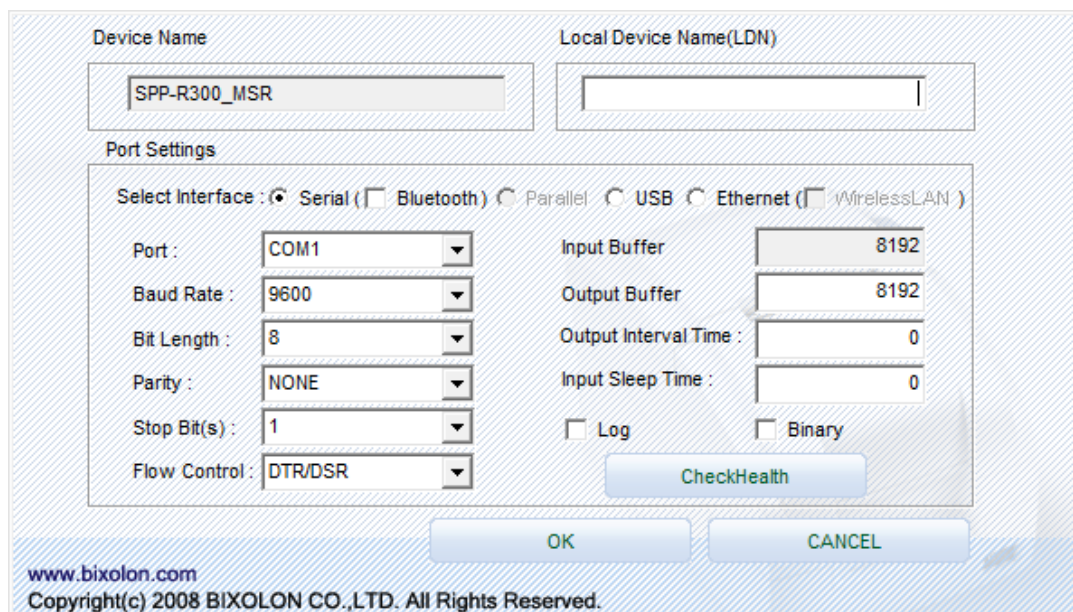
## 2-4 MSR Registration

1) Click “Add MSR” button.

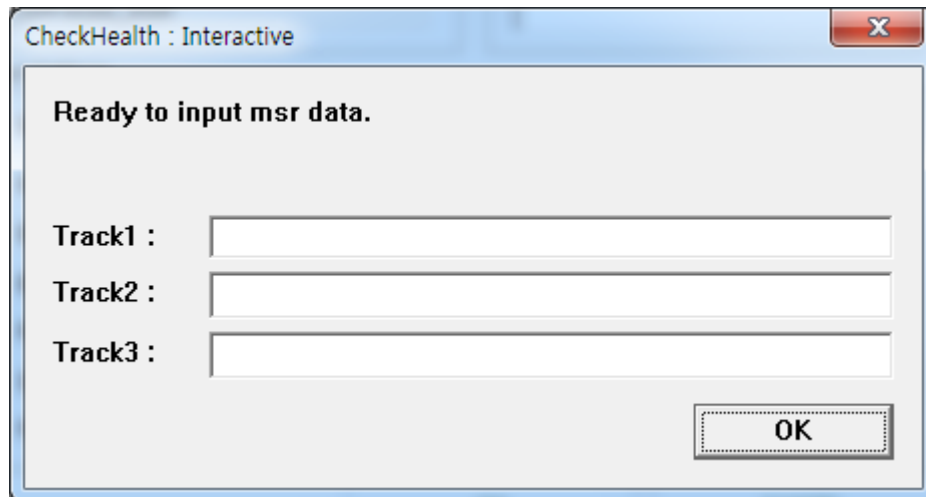


2) Select MSR model and click “NEXT” button.

3) Set up MSR and click “SAVE” or “OK” button.

A configuration dialog box for an MSR device. It has two text input fields at the top: "Device Name" (containing "SPP-R300\_MSR") and "Local Device Name(LDN)". Below these is the "Port Settings" section. It starts with "Select Interface" and radio buttons for "Serial" (selected), "Bluetooth", "Parallel", "USB", "Ethernet", and "WirelessLAN". Below this are several settings: "Port" (COM1), "Baud Rate" (9600), "Bit Length" (8), "Parity" (NONE), "Stop Bit(s)" (1), and "Flow Control" (DTR/DSR). On the right side of the settings are "Input Buffer" (8192), "Output Buffer" (8192), "Output Interval Time" (0), and "Input Sleep Time" (0). There are also checkboxes for "Log" and "Binary". A "CheckHealth" button is located below the "Log" and "Binary" checkboxes. At the bottom of the dialog are "OK" and "CANCEL" buttons. The footer contains the text "www.bixolon.com" and "Copyright(c) 2008 BIXOLON CO.,LTD. All Rights Reserved."

4) Click "Checkhealth" to see if the data is entered correctly.



\* if the system has more ports than the default port range of BIXOLON OPOS Driver Setup Utility, click "Port Range" button and set the port range.

\* If you select the port that the system doesn't have, the device won't operate.

